

Sour Strawberry Diesel THCA #4
Cal Nistor

Sample: 1808PSI0178.12232

Lic. #

Strain: Sour Strawberry Diesel THCA #4

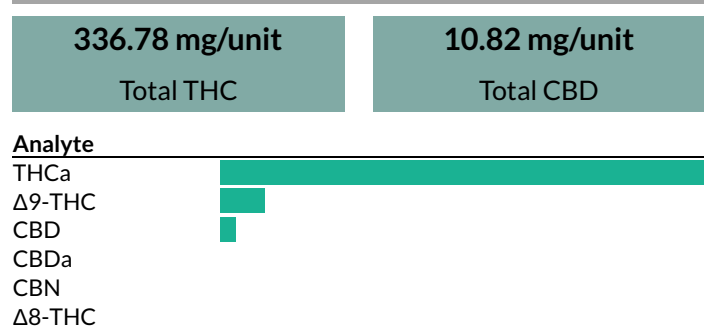
Ingestible, Tincture

Batch#: ; Batch Size: - grams

Sample Received: 08/15/2018; Report Created: 08/17/2018

Cannabinoid Profile

Cannabinoids	Concentration (Mass)	Error (+/- 10%)
Δ9-THC	31.96 mg/unit	+/- 3.20
THCa	347.57 mg/unit	+/- 34.76
% Active THC	8.4%	
CBD	10.82 mg/unit	+/- 1.08
CBDa	ND	+/- 0.00
% Active CBD	100.0%	
CBN	ND	+/- 0.00
Δ8-THC	ND	+/- 0.00
Total Cannabinoids	390.35 mg/unit	

Cannabinoid Profile Plot


15 mL

Unit Weight: 13.4g

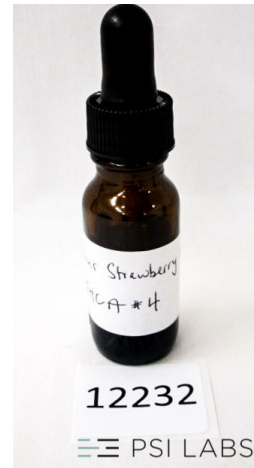
Notes

Method: HPLC/DAD

Total THC = THCa * 0.877 + d9-THC

Total CBD = CBDa * 0.877 + CBD

LOQ = Limit of Quantitation; The reported result is based on a sample weight with the applicable moisture content for that sample; Unless otherwise stated all quality control samples performed within specifications established by the Laboratory.

Product Image


Click "Share" on your Confident Cannabis results page to share your results on Instagram, Facebook, And Twitter or email! #PSILabs

Tell your customers to scan the QR code here and on your labels to verify the authenticity of your PSI Labs results

